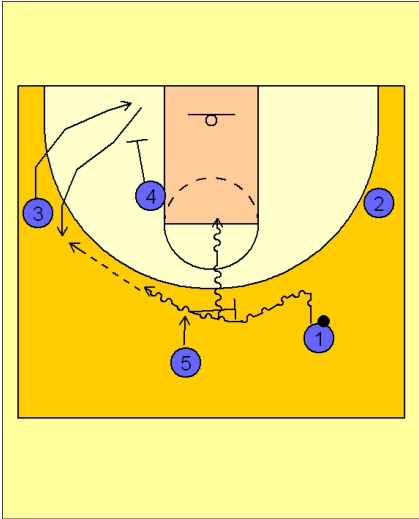




Early offense (2)



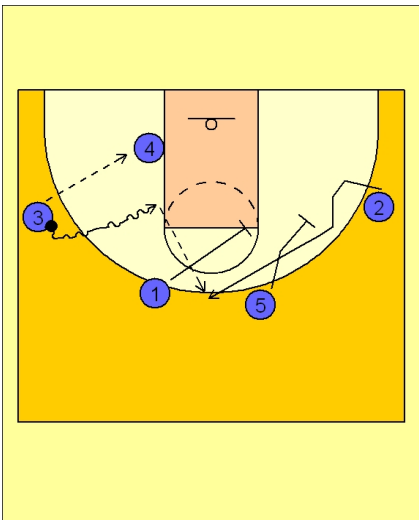
Arizona Early Offense

#1 uses the ball screen in the middle of the floor from the trailer post #5.

As #1 is coming off the ball screen, #3 is using a down screen from #4 to get open on the left wing.

#1 can look to turn the corner and attack the basket down the middle of the floor.

If he doesn't attack the lane, he will look to pass to #3 on the left wing.



Arizona Early Offense

#3 will now look to either feed the post player #4, penetrate into the lane or look to hit #2 coming off the double staggered screen from #1 and #5.